



FOR RENT

21 PINEHURST ROAD, 28805
AVAILABLE 12-15-2017

3 BR/ 2BA \$1400/month

- 3 BR, 2 bath Ranch, built 1960
- 1525 square feet on .32 Acres
- Covered carport + off street parking
- Full walkout daylight basement
- Oil + Heat Pump with Central AC
- Super clean, like new condition

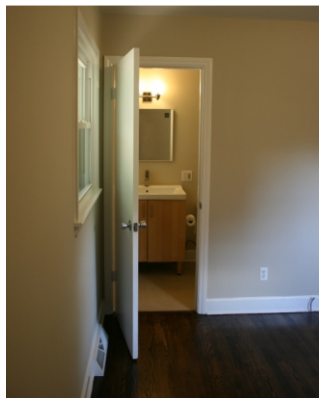
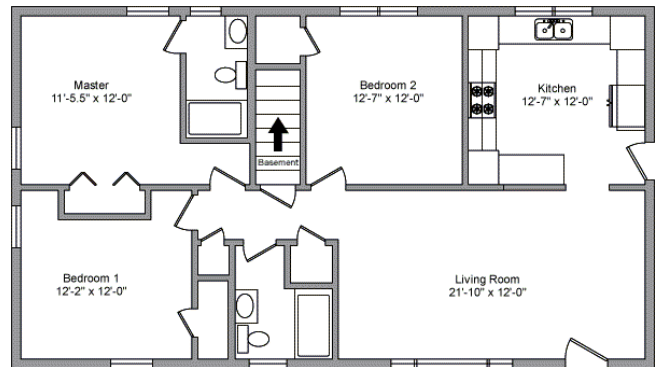
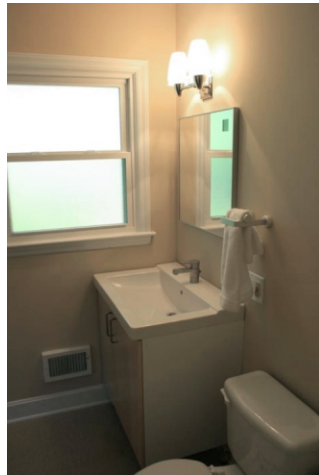


Newly refinished oak hardwood floors
 Beautiful kitchen with stainless appliances, dishwasher, breakfast bar and pantry.
 Full size washer & dryer in basement
 2nd refrigerator in basement
 Hall bath has tub/shower
 Master bath has 48" walk in shower



Great location in East Asheville
 2 minutes to 240; 5 minutes to downtown; 1/2 mile to golf course, great family neighborhood, close to schools, shopping and library.
 Big grassy front yard with mature maples, sloping hillside backyard.

Good credit and rental history/references a MUST.
 Cat OK, no dogs, no smoking.
 \$1500 per month • 1 year lease min.
 Upon approval, First + last + \$400 deposit to move in.



To see inside and get a lease application, call Randy & Cynthia Decker (828) 298-1212
 manager@acmehomeandland.com
 www.acmehomeandland.com